



# ***UltraFire™***

## **User Manual**



Copyright: August 2014

## Table of Contents

---

I.	Table of Contents .....	1
II.	Camera Overview .....	2
III.	UltraFire™ Specifications .....	3
IV.	Batteries & Memory Cards .....	4
V.	Setup & Programming .....	7
VI.	Mounting Your Camera .....	13
VII.	Aiming Your Camera .....	14
VIII.	Image Data Information .....	16
IX.	Troubleshooting .....	18
X.	Warranty, FCC, and Safety Information .....	20
XI.	Your Information and Camera Warranty Registration .....	22
XII.	Copyright & Trademark Information .....	24



## Camera Overview

---

Congratulations on purchasing a RECONYX® camera. RECONYX® has been the leader in digital wildlife cameras since 2002. Your UltraFire™ camera is a state-of-the-art digital camera, Passive Infrared (PIR) motion detector and a night time illuminator, all contained in a secure, rugged and weather-resistant case.

Whether you are using the camera for scouting deer or studying wildlife, you will find that using the UltraFire™ camera in conjunction with BuckView™ Advanced software will be one of your most valuable tools in gathering and analyzing data.

**Thank you for putting your trust in us!**

### Contents of this package:

- UltraFire™ Camera.
- BuckView™ Advanced software (CD-ROM).
- Adjustable bungee cord for mounting camera.
- This instruction manual.

### Other things you will need:

- Secure Digital® (SD or SDHC) Memory Card (Class 6 or faster is recommended).
- 12 AA Batteries.  
**NOTE:** *UltraFire™ cameras will only operate on either NiMH rechargeable batteries or Energizer® 1.5V AA Ultimate Lithium™ batteries.*

### Optional:

- Windows® PC to install BuckView™ software.
- A computer, television or other device to view your pictures or videos.

---

**NOTE:** If you have any questions or concerns relating to the operation or functionality of your camera, please contact our Technical Service Department by email at [support@reconyx.com](mailto:support@reconyx.com) or by calling toll free [866-493-6064](tel:866-493-6064).

## UltraFire™ Specifications

	WR6	XR6
Night Time Illumination	White Flash Color LED up to 60 feet	NoGlow™ Covert Infrared up to 80 feet
Image Resolution	1080P HD Video with Stereo Audio Still Image Resolution Options: 3.4, 5.0 or 8.0 MP	
Trigger Speed	~1 second	
Battery Requirements	12 AA size Lithium or NiMH Rechargeable Batteries	
SD Card Capacity	Up to 32GB	
Time-Lapse Field Surveillance	Included	
Warranty	2 years	



### ***BuckView™ ADVANCED***

RECONYX® Outdoor Series UltraFire™ Cameras include BuckView™ Advanced mapping and image management software with Google Maps® technology. This allows you to geographically organize and access your images and videos and helps you to pattern and understand animal movements and behaviors. In addition to camera locations, you can add food plots, tree stands and more. Our exclusive Quick Tag™ feature will allow you to tag photos of specific bucks and add them to your Hit List. BuckView™ Advanced also enables you to easily upload and share your RECONYX® photos to Facebook® and Twitter®.

Refer to the *BuckView User Guide*, accessible within the software, for more information. BuckView™ requires a personal computer running Windows XP®, Windows Vista®, Windows 7® or Windows 8®.



## Battery Specifications and Installation

Your RECONYX® UltraFire™ camera runs on twelve AA-cell batteries. We highly recommend using either Energizer® Ultimate Lithium™ batteries or high-quality NiMH Rechargeable batteries in your camera. **Alkaline batteries do not provide as much power as Lithium or NiMH batteries, they are adversely affected by both hot and cold weather and are not recommended.**

NiMH will operate at temperatures down to -20°F. Lithium batteries will operate to -40°F.

**NOTE:** Be sure to load batteries in the proper orientation (alternating positive/negative, six in each battery bay). A visual guide to battery placement is molded into the bottom of each battery bay. **Make sure that the Battery Removal Ribbon is under the batteries!**



**Warning!** Do not mix battery types! Damage to the camera can result and your warranty will be voided if you mix battery types.

## Secure Digital® (SD or SDHC) Card Specifications

A Secure Digital (SD/SDHC) card is used to store the pictures your camera captures. These images may be transferred to your computer using standard image viewing software or RECONYX® BuckView™ mapping and image management software.

## Inserting and Removing memory cards

Make sure the orientation is correct and that the card is aligned properly. Push gently on the memory card as shown below until it clicks into place.

**Warning:** Inserting the memory card upside down or backwards could damage the camera or the memory card. **Damage resulting from inserting the card incorrectly is not covered under warranty.**



## To remove memory cards:

1. Press <OK> to disarm the camera (the number of pictures and videos taken since last armed will be displayed).
2. Turn the camera off.
3. Press and release the card to partially eject the memory card.
4. The card can then be removed by grasping it with your fingers.

**NOTE:** Always disarm the camera (by pressing OK) and turn the power off before removing or inserting the memory card.

## Memory Card - File System Requirements

Secure Digital cards have various speeds and capacities. Larger capacity cards are capable of storing more images. Your UltraFire™ camera can accept cards up to 32GB, but most users will find 8GB and 16GB cards to be more than adequate for normal use.

Cards with higher speed ratings (Class 6 or Higher) are recommended for reading and writing images faster. This is advantageous when taking High Definition Videos.

## Troubleshooting your memory card

If you have a memory card that does not seem to work, or you used the card in another device, you may have to re-format your memory card. This can be done with the included BuckView™ software under the “Tools” menu item or with any Windows® Operating System.

## **Windows® – Steps to format memory card**

**Step 1:** Insert your memory card into your computer's card reader.

**Step 2:** Click "Start -> My Computer". You should see your memory card under the list of available drives. Be sure to check its contents first to make sure that you have the right drive.

**Step 3:** Right-click on the drive and choose 'Format'.

**Step 4:** Under "File system" select the "FAT32" option then click on 'Start'.

**Step 5:** Once the process is completed, take the memory card out and insert it into your Camera.

## Setup & Programming

---

Insert the SD card and batteries, then turn the camera on by momentarily pressing the “OK” button until the buttons light up.

**NOTE:** If this is the first time you’ve used your camera, it will automatically display the **Date/Time** setup change option, beginning with **Enter Year**.

Press the **LEFT** or **RIGHT** directional buttons to adjust each field and the **UP** or **DOWN** directional buttons to scroll through the fields for each step (Year, Month, Day, Hour, Minute and AM/PM); pressing the **OK** button once the SAVE field is highlighted in order to save all of your changes.

Date/Time	
Year	2014
Month	Jan
Day	1
Hour	12
Minute	00
AM/PM	AM
Cancel Save	

**TIP:** After the initial Date/Time setup options are completed, your camera is ready to take pictures and/or videos. All you need to do is make sure your camera has a card and batteries installed, mount it to a tree, turn it on, close it up, and walk away. The camera will automatically arm and start taking pictures with default settings after 2 minutes. Default settings are as follows: 3 pictures with a 2 second delay between each picture or a 10 second video clip.

### Default Settings

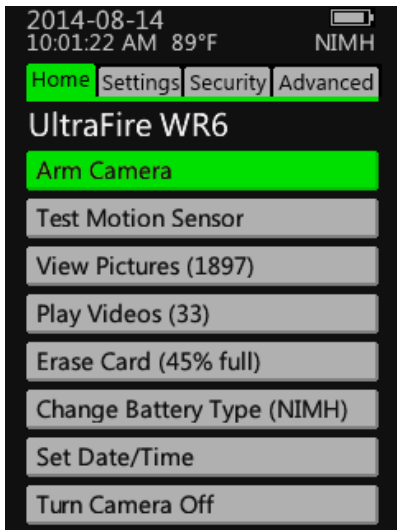
Your RECONYX® UltraFire™ camera comes pre-programmed with factory default settings. The default programming for still images is 3 pictures per trigger with a 2 second pause between those pictures. Video default length is 10 seconds. The default setting for the Quiet Period (delay between triggers) is “No Delay”. For reference, all default settings will be highlighted in **red** in this manual.

If you wish to change your camera’s settings you can do so easily in the field at any time. You can make changes by using the control buttons and the LCD display. Once you make selections, they are retained by the camera, even when the camera is off and the batteries are removed. You do not need to make selections again unless you want to change something.



## ULTRAFIRE™ Programming Menu

Your camera includes four Tabs of options (Home, Settings, Security and Advanced). The programming menus are set up so that the most commonly used items are on the **Home** tab.

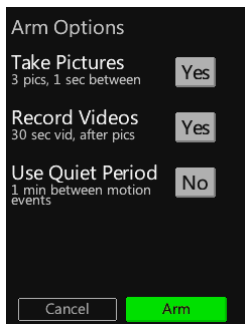


**NOTE:** As with the date and time, you can move through and select any of the menu options by pressing the directional buttons (**UP**, **DOWN**, **LEFT** and **RIGHT**) to navigate and the **OK** button to save the option you want.

**NOTE:** The camera will remember the settings even when shut off and the batteries removed, so you do not need to reconfigure the camera unless you want to change its behavior.

## Home Tab: Main Menu Items

**Arm Camera** – When you select this option, you will be taken to the ARM CAMERA page. You then can confirm that you want the camera to take **Still Photos, Videos** and utilize a **Quiet Period** after the motion event. You can use the direction buttons to make your choices regarding these options and then push the **OK** button once the **ARM** field is highlighted at the bottom of the screen. The camera will arm in ten seconds unless you cancel it before the countdown is complete by pressing the **OK** button.



**Test Motion Sensor (also called WalkTest)** – When you select this option your camera flashes a red indicator light so that you can test its aim by walking in front of it. The WalkTest mode shows you exactly where the camera's active motion detection zones are located. The tilt of the camera is critical, as slight changes are magnified at greater distances from the camera.

***TIP:** If left in Motion Sensor Test mode, the camera will automatically arm itself after 2 minutes with no motion events. This allows you to set the camera up, check its aim using WalkTest, and then just walk away.*

**View Pictures** – When you select this option, the camera will enter into a slide show function. The **LEFT** and **RIGHT** directional buttons will allow you to scroll through the images on the memory card. The **UP** directional button will engage a pan/zoom feature while the **DOWN** directional button will allow you to delete the image being viewed at that time. Pressing the **OK** button will allow you to exit from the slide show and return you to the Home page.



**Play Videos** – When you select this option, the camera will enter into a slide show function to view thumbnails of the videos on the memory card. The **LEFT** and **RIGHT** directional buttons will allow you to scroll through the thumbnails. The **UP** directional button will play the video while the **DOWN** directional button will allow you to delete the video being viewed at that time. Pressing the **OK** button will allow you to exit from the video slide show and return you to the Home page.



**Erase Card** – When you select this option, your camera wipes your entire memory card clean, removing all images and other information from the card. You should **not** select **Erase Card** unless you are absolutely certain you want to remove everything from the card.

**Change Battery Type** – Allows you to select what type of batteries you are using (Lithium-**LITH** or Nickel Metal Hydride Rechargeable-NiMH). Choosing the correct battery type is critical to ensuring that the camera provides you with an accurate battery reading. Pushing the **OK** button once the **Save** field is highlighted at the bottom of the screen will save your chosen options.

**Set Date/Time** – Refer to the Initial Set Up and Programming instructions earlier in this guide regarding Date/Time programming options.

**Turn Camera Off** – Pressing the **OK** button when this field is highlighted will immediately turn the camera off. All previously set programming options will be saved. The camera can also be turned off at any time by holding the **OK** button down for approximately 1 second.

## Settings Tab: General Settings

**Change Picture Settings** – This page allows the user to change the number of pictures taken (default is **3**) per motion event (1 to 10). It also allows you to change the time between each photo (**2** to 10 seconds). You can also adjust the image resolution (**3**, 5 or 8 megapixels). Use the directional buttons to change programming options and then push the **OK** button once the **Save** field is highlighted. All programming options will be saved even after the camera is turned off.

**Change Video Settings** – This programming option allow you to choose the length of video (**10**, 20 or 30 seconds) as well as choose the video resolution (720P-30 frames per second, 720P-60 frames per second or **1080P-30** frames per second). Pushing the **OK** button once the **Save** field is highlighted at the bottom of the screen will save your chosen options.

**Adjust Motion Sensor** – This screen allows you to turn the motion sensor **On** or Off as well as adjusting the motion sensor's sensitivity levels (Low, Medium Low, Medium, Medium High or **High**). It is highly recommended that you do not change the sensitivity levels for most applications. Pushing the **OK** button once the **Save** field is highlighted at the bottom of the screen will save your chosen options.

## Security Tab: Security Settings

**Change CodeLoc Settings** – CodeLoc™ allows the user to add a four-digit security code to the camera to prevent unauthorized use in the event of tampering or theft. Pushing the **OK** button once the **Save** field is highlighted at the bottom of the screen will save your chosen code.

***TIP:** Remember to write your four-digit CodeLoc™ code on the last page of this manual in case it is forgotten.*

## Advanced Tab: Advanced Settings

**Change Time Lapse Settings** – This option allows the user to take Time lapse photos/videos based upon a clock function, which is independent of the Motion Sensor. Time Lapse provides you with the benefit of being able to monitor a large area such as a food plot. This screen allows you to turn Time Lapse On or **Off** and change the Time Interval (1, 5, 15, 30 minutes or 1 hour) between photos/videos. Pushing the **OK** button once the **Save** field is highlighted at the bottom of the screen will save your chosen options.

**Restore Default Settings** – Choosing Yes on this screen will restore your camera to the original factory settings. All defaults are highlighted in **red**.

**Change Pic/Vid Label** – This screen will allow you to add a label (up to 20 characters) that will appear on the lower-left portion of all photos taken by your camera. You can also view, change, or clear an existing label. Pushing the **OK** button once the **Save** field is highlighted at the bottom of the screen will save your chosen options.

**Set Time/Temp Format** – This screen enables you to adjust the time display from the standard **12 Hour** period to a 24 Hour period. It also allows you to change the temperature display from **Fahrenheit** to Celsius. Pushing the **OK** button once the **Save** field is highlighted at the bottom of the screen will save your chosen options.

**Change HDMI Settings** – This screen allows you to change the output options of the Micro HDMI connection from the camera to your monitor (**Auto**, 720P, 1080i or 1080P). The camera will automatically choose the best output in most situations, but may not work for all. Pushing the **OK** button once the **Save** field is highlighted at the bottom of the screen will save your chosen options.

**Display Version Information** – This screen displays the camera's Serial Number as well as the version of Firmware. **Please visit [www.reconyx.com](http://www.reconyx.com) for Firmware updates!**

## Mounting Your Camera

---

The camera can be mounted to a tree by using the included adjustable bungee cord (shown below). Simply thread the end without the loop through the camera, then install the included bungee hook and adjust to the length needed to securely fasten the camera to the tree. For added security, a Python™ Cable Lock by MasterLock® can be threaded through the secondary hole also locking the camera latch in place.

Visit our website [www.reconyx.com](http://www.reconyx.com) for other options for mounting and securing your camera.

### **Mounting Camera with Adjustable Bungee Cord (included)**



We recommend that you mount your camera at a height of approximately 4 feet. This height is optimal for detecting animals in the field of view of the camera as well as for accessing the camera's card, batteries, and controls.

**NOTE:** It is highly recommended that you use a theft deterrent device such as a Security Enclosure and a lock to help secure your camera against possible theft when it is in the field.

***TIP:*** Be sure to enable the Codeloc™ feature on your camera for additional security.

## Aiming Your Camera

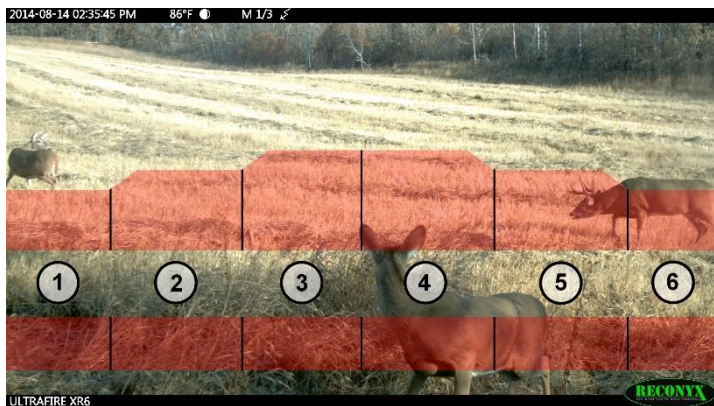
### PIR Motion Detector

The Passive Infrared Motion Detector on your UltraFire™ camera is precisely aligned with the camera lens to give you the best chance of capturing subjects that come into the field of view of the camera, while not capturing pictures of anything that is not in the view of the camera.

The motion detector can detect movement up to 100 feet (30.5m) away.

However, the detection range is dependent on the temperature of the source in relation to the ambient air temperature.

The UltraFire™ Motion Detector consists of two horizontal detection bands, as well as six different zones within each detection band.



**For the camera to take a picture two things need to happen:**

- 1) An object (typically an animal) with a temperature different from the background temperature must be present within one of the detection bands. (i.e. something warmer or colder than the ambient temperature).
- 2) That object (i.e. something with a different temperature) must be moving into or out of at least one of the six motion detection zones.

**NOTE:** In the photo above the deer to the far right and the deer in the middle would each trigger the camera. The deer to the far left would not trigger the camera since it is above the top detection band.

## Motion Sensor Test Mode

Learning to use the WalkTest mode is critical to being as successful as possible with your RECONYX® camera. The WalkTest mode allows you to precisely determine your camera's active motion detection zones – ensuring your camera is aimed exactly where you want to capture animal activity.

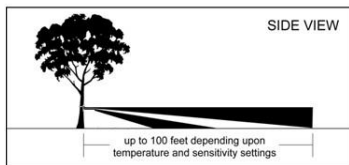
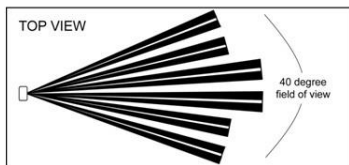
- 1) Secure the camera to a tree or other object aiming the camera toward where you want it to capture pictures.
- 2) Put camera in **Motion Sensor Test** mode, and close the camera.
- 3) Walk in front of the camera where you expect to capture pictures. Every time the red WalkTest light blinks it indicates that a motion event is taking place. If the WalkTest light does not blink where you expect it to, adjust the aim or location of the camera.
- 4) If possible, set up the camera so that no large trees or objects are in the main field of view of the camera, as they can adversely affect motion detection as well as night time flash range.

**NOTE:** All RECONYX™ cameras will self-arm from the WalkTest mode after a two minute period during which it does not detect any motion events.

**TIP:** *When setting the camera up it's best to position the camera so it is not in the normal line of sight for the subject you are trying to capture photos of so it is not visibly detected. If possible set the camera up behind or perpendicular to the normal direction of travel.*

*Be sure to use the **Motion Sensor Test** mode to be sure the camera is aimed correctly.*

## PIR MOTION DETECTOR COVERAGE AREA





## Image Data Information

Your RECONYX® UltraFire™ camera stores Image Data along in every picture it takes. Some of this information is displayed on the Image Data bands above and below the image.

### TOP DATA BAND

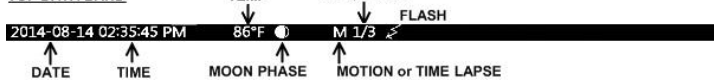


IMAGE  
DATA  
BANDS

### BOTTOM DATA BAND



- An **M** or **T** in the top data band indicates a “motion” or “time-lapse” event.
- “**1/3**” indicates the first in a sequence of three pictures for that event.
- Moon Phases displayed include: ☉ (new moon), ☾ (waxing crescent), ☽ (first quarter), ☺ (waxing gibbous), ☀ (full moon), ☾ (waning gibbous), ☾ (last quarter), and ☾ (waning crescent).
- The “Illumination” ⚡ indicator appears in the Image Data bands when the illuminator (flash) is used.

**TIP:** There is additional image data accessible using BuckView™; including camera serial number, firmware version, battery voltage, and much more.

## Troubleshooting

---

For answers to questions about your RECONYX™ UltraFire™ camera that you cannot find in this *Instruction Manual*, please contact RECONYX™ Technical Support at [support@reconyx.com](mailto:support@reconyx.com) or call 1-866-493-6064.

### **Firmware Updates**

You should also periodically check the RECONYX® web site for firmware updates for your camera. We periodically release firmware updates with new features and/or performance enhancements. Updating firmware on the UltraFire™ Series cameras takes just a few minutes and is well worth the effort to ensure your camera is performing at the highest level possible.

### **Limited Night Time Range**

If your nighttime range is less than expected, check to be sure your batteries are new or fully charged. NiMH rechargeable batteries or Energizer® 1.5V AA Ultimate Lithium™ batteries are the only power source approved for RECONYX® cameras. Alkaline batteries cannot deliver enough amperage to power the illuminator consistently at night and are not recommended.

The physical camera setup is also important in getting good nighttime images. If you aim the camera out over an open field where there is nothing within range to reflect the Infrared energy back toward the camera, the images will appear very dark (like shining a flashlight into the night sky). The best nighttime images will be captured when you have a backdrop of some sort that will reflect energy back toward the camera (e.g. trees, tall grass, fence, building, hillside, etc).

### **Focus Problems**

*If your images appear cloudy or out of focus*, first consider whether there was condensation or frost on the camera windows; you may wish to check your camera after a fresh snowfall to be sure the windows are not covered with snow. Next, check the windows for dirt and water spots, and gently clean them with a clean soft cloth and glass cleaner or water. Image clarity can also be adversely affected by very high temperatures, so it is a good idea to mount your camera where it will not be getting direct sunlight during the heat of the day.

### **False Triggers**

*If you seem to be getting false triggers (i.e. the camera is taking pictures of nothing)*; first, restore your camera back to the Default settings and try your

camera again. This will ensure that you are running with known settings – with the motion detector ON at HIGH sensitivity and with Time-Lapse OFF.

If after going back to the Default settings, you still seem to be getting false triggers, check the physical setup of your camera. The sun should not be shining directly on the face of the camera, and the camera's field of view should be cleared of as much vegetation as possible. False triggers most occur most on sunny, breezy days. Vegetation will soak up the sun's energy and it will become warmer than the ambient air temperature. When the wind moves the vegetation, the camera detects this and cannot distinguish it from a warm-blooded animal moving through the scene. For this reason, careful placement and setup of your camera helps prevent false triggers.

Only as a LAST resort should you turn down your camera's motion sensitivity; this reduces your ability to detect movement of warm-blooded animals, especially during the summer.

### **Camera Not Triggering on Animals**

First, restore the camera back to Default settings and try your camera again. This will ensure that you are running with known settings – it will set the motion detector ON at HIGH sensitivity. This is important, especially in the warmer months, because as the background temperature approaches the temperature of the animals, the strength of the signal decreases and the range goes down accordingly.

If you are still having trouble, please refer to the *“Mounting and Aiming Your Camera”* section for detailed information, as well as using the WalkTest mode. Keep in mind that most animals are not 6 feet (2 meters) tall, so when you use the WalkTest mode, do not just walk by the camera in a full upright stance. The camera may be triggering on your upper torso or head and not on your legs (where most animals are likely to be). There is an inactive zone that you need to be aware of so that you don't aim the inactive zone precisely on a trail – if you do, you will not pick up animal activity on the trail.

It is important to keep in mind that there are other factors that can also affect the ability of your camera to detect motion. Wind can have a detrimental effect. Body heat from an animal can be quickly dispersed away from the animal on a breezy day, making it more difficult for the camera to detect the animal. Also movement directly toward and away from the camera is less likely to trigger the camera than side-to-side movement. And, finally, if an animal is moving very

slowly, it will sometimes not produce a strong enough signal within the sensor to trigger the camera.

### **Memory Card Problems**

*If your camera won't start up properly and/or displays "card locked", first check to be sure your card is not "Locked".* On most SD cards there is a switch on the side of the card. If the card is locked, you will not be able to save any photos. If the card is not locked, but this message persists, you can attempt to clean the contacts in the card holder by blowing canned air into the card slot. This will often resolve the issue.



If you have other issues, you may have to try a different brand of memory card. We have found that some of the less expensive memory cards are very slow and do not always run well (even if they are advertised as fast). RECONYX® certified memory cards are available at [www.reconyx.com](http://www.reconyx.com).

### **Cold Weather Problems**

*If your camera shuts down in the cold,* it may be too cold for the batteries to operate reliably. Refer to the "Battery Specifications" section for recommended battery types. Extreme cold weather may have an adverse affect on the LCD display; this does not inhibit the camera's ability to function.

### **Battery Life Less than Expected**

NiMH batteries have decreased life in hot weather. They will run the camera, but they will have decreased run time. It is not unusual to see battery life drop off 50% or more when daytime temperatures near 90° Fahrenheit or higher. This will not damage your NiMH batteries; but they will discharge at a faster rate.

### ***Other Questions?***

**If you have read this manual and checked our web site, and you still need assistance, please contact our Technical Support Department at 866-493-6064 or e-mail [support@reconyx.com](mailto:support@reconyx.com).**

## Warranty, FCC, CE and Safety Information

---

### RECONYX® Limited Hardware Warranty

RECONYX® UltraFire™ cameras are warranted against manufacturers defects in materials and workmanship for a period of two years from the date of purchase. If during this period, through normal use, the product fails due to defects in materials or workmanship, RECONYX™ will either repair or replace the product at our discretion.

**NOTE: There is a warranty seal on your camera; if this seal is broken or tampered with, the warranty is void.**

### Repair or Replacement

Buyer must obtain a Return Authorization (RA) number from RECONYX® before returning any product(s) for repair or replacement. If RECONYX® concludes that a returned product is not defective, Buyer will be notified, the product will be returned to Buyer at Buyer's expense, and Buyer may be charged for examination and testing of the product.

This limited warranty is the sole warranty for hardware and software products offered by RECONYX® and RECONYX® shall not be liable for any amounts for said products except in compliance with this warranty.

### FCC CE Certification

This device complies with part 15 of the FCC Rules. Operation is subject to the following conditions: (1) This device may not cause harmful interference, and (2) this device must accept any interference received, including interference that may cause undesired operation. The Reconyx, Inc. UltraFire Digital Trail Camera has been tested and found to comply with the emissions requirements of IEC 61000-6-3 and the immunity requirements of IEC 61000-6-1. Reconyx, Inc. UltraFire Digital Trail Camera has been tested and found to comply with the radiated interference requirements of Section 6.2 of the Industry Canada ICES-003 for Class B Information Technology Equipment (ITE).

### Safety Precautions

Before using the camera, please ensure that you read and understand the following safety precautions. Always ensure that the camera is operated correctly. The safety precautions noted in this guide are intended to instruct you in the safe and correct operation of the camera and its accessories to prevent injuries or damage to yourself, other persons, and equipment.

### Preventing Malfunction

#### ***Avoid Strong Magnetic Fields***

Never place the camera in close proximity to electric motors or other equipment generating strong electromagnetic fields. Exposure to strong magnetic fields may cause malfunctions or corrupt image data.

## ***Avoid Condensation***

Moving the camera rapidly between hot and cold temperatures may cause condensation (water droplets) to form on its external and internal surfaces. You can avoid this by placing the camera in an airtight, plastic bag and letting it adjust to temperature changes slowly before removing it from the bag.

## ***If Condensation Forms Inside the Camera***

Stop using the camera immediately if you detect condensation inside the camera. Continued use may damage the camera. Remove the memory card and batteries from the camera and wait until the moisture evaporates completely before resuming use.

## **Warnings**

- Store this equipment out of the reach of children and infants.
- Do not allow water or other liquids to enter the interior of the camera. The interior has not been waterproofed. If the exterior comes into contact with liquids or salt air, wipe it dry with a soft, absorbent cloth. In the event that water or other foreign substances enter the interior, immediately turn the camera's power off and remove the camera batteries and memory card.
- Use of power sources not expressly recommended for this equipment may lead to overheating, fire, electrical shock, or other hazards.
- Do not short-circuit the battery terminals with metallic objects, such as key holders. It could lead to overheating, burns, and other injuries.
- Avoid using, placing, or storing the equipment in places subject to strong sunlight or high temperatures, such as the dashboard or trunk (boot) of a car. Exposure to intense sunlight and heat may cause the batteries to leak, overheat or explode, resulting in fire, burns or other injuries. High temperatures may also cause deformation of the casing.
- When using desiccant, the following precautions should be followed: Keep desiccant out of reach of children. Desiccant may cause eye or skin irritation; seek medical assistance for further treatment,
- Check your state/local laws concerning the use of this product.

## Your Information and Camera Warranty Registration

### Record Your Information

After you have familiarized yourself with this instruction manual, your camera, and software, you should record some basic information here so that you don't lose it. It is also a good idea to keep your purchase receipt in case you would need warranty work done on your camera.

Date Purchased: \_\_\_\_\_

Place of Purchase: \_\_\_\_\_

Camera Model: \_\_\_\_\_

Camera Serial #: \_\_\_\_\_

CodeLoc™ Password: \_\_\_\_\_

www.reconyx.com Username: \_\_\_\_\_

www.reconyx.com Password: \_\_\_\_\_

### Register your Camera

Register your camera online at [www.reconyx.com/register](http://www.reconyx.com/register) or by mailing the registration form below to:

RECONYX, Inc.  
3828 Creekside Lane  
Holmen, WI 54636

#### RECONYX® UltraFire™ Warranty Registration

Name: \_\_\_\_\_

Address: \_\_\_\_\_

City: \_\_\_\_\_ St: \_\_\_\_\_ Zip: \_\_\_\_\_

Phone: \_\_\_\_\_

Email: \_\_\_\_\_

Camera Model: \_\_\_\_\_

Serial Number: \_\_\_\_\_

Date Purchased: \_\_\_\_\_

Retailer: \_\_\_\_\_

## Copyright & Trademark Information

---

UltraFire™ Instruction Manual Copyright August 2014

**Other trademarks and registered trademarks referred to in this document:**

- UltraFire™ and BuckView™ are trademarks of RECONYX®.
- Google Maps® is a registered trademark of Google, Inc.
- Facebook® is a registered trademark of FACEBOOK.
- Twitter® is a registered trademark of Twitter.
- Secure Digital® (SD and SDHC) are registered trademarks of the SD Association.
- Energizer® is a registered trademark of Energizer Corp.
- Windows XP®, Windows Vista®, Windows 7® and Windows 8® are registered trademarks of Microsoft Corporation.
- Python Locks™ are a product of Master Lock®.

All other trademarks and copyrights referred to are the property of their respective owners.



**RECONYX, Inc.**  
**3828 Creekside Lane**  
**Holmen, WI 54636**

**866-493-6064**

**[www.reconyx.com](http://www.reconyx.com)**

**Manual Version: 20140815v1**